

PROJECT #
02-000-83



GOVERNMENT
BLOCK
BOOK # 2

82 0022

Field Book

50% rag paper
32 pages

4⁵/₈" x 7¹/₄"

Keuffel & Esser Co., Morristown, N. J. 07960 Made in U.S.A.

CURVE FORMULAS

$$T = R \tan \frac{1}{2} I$$

$$T = \frac{50 \tan \frac{1}{2} I}{\text{Sin. } \frac{1}{2} D}$$

$$\text{Sin. } \frac{1}{2} D = \frac{50}{R}$$

$$\text{Sin. } \frac{1}{2} D = \frac{50 \tan \frac{1}{2} I}{T}$$

$$R = T \cot. \frac{1}{2} I$$

$$R = \frac{50}{\text{Sin. } \frac{1}{2} D}$$

$$E = R \text{ ex. sec } \frac{1}{2} I$$

$$E = T \tan \frac{1}{4} I$$

$$\text{Chord def.} = \frac{\text{chord}^2}{R}$$

$$\text{No. chords} = \frac{I}{D}$$

$$\text{Tan. def.} = \frac{1}{2} \text{ chord def.}$$

The square of any distance, divided by twice the radius, will equal the distance from tangent to curve, very nearly.

To find angle for a given distance and deflection.

Rule 1. Multiply the given distance by .01745 (def. for 1° for 1 ft.) and divide given deflection by the product.

Rule 2. Multiply given deflection by 57.3, and divide the product by the given distance.

To find deflection for a given angle and distance. Multiply the angle by .01745, and the product by the distance.

GENERAL DATA

RIGHT ANGLE TRIANGLES. Square the altitude, divide by twice the base. Add quotient to base for hypotenuse.

Given Base 100, Alt. $10 \cdot 10^2 \div 200 = .5$. $100 + .5 = 100.5$ hyp.

Given Hyp. 100, Alt. $25 \cdot 25^2 \div 200 = 3.125$. $100 - 3.125 = 96.875 = \text{Base}$.

Error in first example, .002; in last, .045.

To find Tons of Rail in one mile of track: multiply weight per yard by 11, and divide by 7.

LEVELING. The correction for curvature and refraction, in feet and decimals of feet is equal to $0.574 d^2$, where d is the distance in miles. The correction for curvature alone is closely, $\frac{1}{3} d^2$. The combined correction is negative.

PROBABLE ERROR. If d_1, d_2, d_3 , etc. are the discrepancies of various results from the mean, and if Σd^2 = the sum of the squares of these differences and n = the number of observations, then the probable error of the mean =

$$\pm 0.6745 \sqrt{\frac{\Sigma d^2}{n(n-1)}}$$

MINUTES IN DECIMALS OF A DEGREE

1'	.0167	11'	.1833	21'	.3500	31'	.5167	41'	.6833	51'	.8500
2	.0333	12	.2000	22	.3667	32	.5333	42	.7000	52	.8667
3	.0500	13	.2167	23	.3833	33	.5500	43	.7167	53	.8833
4	.0667	14	.2333	24	.4000	34	.5667	44	.7333	54	.9000
5	.0833	15	.2500	25	.4167	35	.5833	45	.7500	55	.9167
6	.1000	16	.2667	26	.4333	36	.6000	46	.7667	56	.9333
7	.1167	17	.2833	27	.4500	37	.6167	47	.7833	57	.9500
8	.1333	18	.3000	28	.4667	38	.6333	48	.8000	58	.9667
9	.1500	19	.3167	29	.4833	39	.6500	49	.8167	59	.9833
10	.1667	20	.3333	30	.5000	40	.6667	50	.8333	60	1.0000

INCHES IN DECIMALS OF A FOOT

1-16	3-32	$\frac{1}{8}$	3-16	$\frac{1}{4}$	5-16	$\frac{3}{8}$	$\frac{1}{2}$	$\frac{5}{8}$	$\frac{3}{4}$	$\frac{7}{8}$
.0052	.0078	.0104	.0156	.0208	.0260	.0313	.0417	.0521	.0625	.0729
1	2	3	4	5	6	7	8	9	10	11
.0833	.1667	.2500	.3333	.4167	.5000	.5833	.6667	.7500	.8333	.9167

TITLE PAGE

GOVERNMENT BLOK

BEGUN BOOK # 1 1-20-83

END BOOK # 1 9-16-83

BEGUN BOOK # 2 9-16-83

END BOOK # 2

PROJ. # 02-000-83

INDEX

The right page of the notebook features a grid of 20 columns and 20 rows. A vertical red line is positioned between the 10th and 11th columns. The grid is formed by light blue horizontal lines and thin black vertical lines.

STA	→ STA	HORIZA	S. DIST	VERT	A
D	121	94°44'25"	121. ⁵⁴	91°31'	Asphalt L
D	122	126°49'	78. ⁹⁸	91°51'	Asphalt L
D	123	153°37'30"	105. ¹⁹	90°58'	Asphalt L
D	124	150°24'30"	179. ²⁹	90°40'	L Asphalt
D	125	148°54'	248. ⁷³	90°42'30"	L Asphalt
D	126	148°22'30"	317. ²¹	90°43'	L Asphalt
D	127	147°56'	384. ²⁰	90°43'	EAST EDGE OF S.W. L.
D	128	148°05'20"	426. ⁶³	90°38'10"	mon # 4 L
NEW HT OF SCOPE = 5.94 EDM =					
D	129	178°35'20"	127. ²⁰	91°14'	Asphalt L
D	130	175°17'	72. ⁷¹	91°25'	POWER POLE L
D	131	178°10"	72. ⁵⁷	91°01'	.35 DOWN TOP OF CURB L
D	132	134°25'25"	41. ⁷⁶	91°49'	R POLE
D	133	95°43'	45. ⁷⁶	90°47'	R CURB .30 Asphalt

FOR DRAINING SEE
PAGE 30 OF GOVERNMENT
BLACK BOOK #1

NEW HI

STA	→ STA	HORIZ	S. DIST	VERT	
D	134	69° 36'	66. ⁵²	90° 35"	R POWER POLE GUY 12' EAST
D	135	78° 28'	93. ⁷³	90° 08'	R ASPHALT
D	136	105° 01' 30"	66. ⁴³	90° 36' 30"	R ASPHALT
D	137	138° 59'	64. ³²	90° 55"	R ASPHALT
D	138	172° 51' 30"	99. ⁰⁰	90° 48"	R SEWER MANHOLE
D	139	159° 48'	107. ⁸⁹	90° 21' 30"	R TOP OF CURB .50 TO ASPHALT
D	140	129° 17'	90. ⁰⁰	90° 27' 30"	POLE R
D	141	88° 34' 30"	113. ²⁹	89° 47'	.35 ASPHALT R TOP CURB
D	142	93° 46'	135. ⁰⁰	89° 54'	R ASPHALT
D	143	109° 26' 30"	118. ¹⁰	90° 06'	R ASPHALT
D	144	136° 07' 30"	114. ²⁵	90° 28' 30"	R ASPHALT
D	145	157° 47'	133. ⁴²	90° 32' 30"	R ASPHALT
D	146	150° 21' 30"	143. ⁶⁷	89° 18'	R FIRE HYDRANT SHOT TAKEN TO TOP OF HYDRANT 2.80 TO ASPHALT

SEE PAGE 30 OF
GOVERNMENT BLOCK BOOK # 1
FOR DRAWING

STA	→ STA	HORIZ Δ	S. DIST	VERT Δ	
D	147	148° 25'	152. ²³	90° 14'	TOP OF CURB R .370 ASPH.
D	148	127° 38' 30"	141. ²²	90° 11'	POLE R
D	149	90° 05' 45"	157. ²¹	89° 41'	R TOP OF CURB 13 TO ASPHALT
D	150	98° 41' 30"	184. ²¹	89° 42' 30"	R ASPHALT
D	151	116° 03' 30"	167. ²²	90° 00' 00"	R ASPHALT
D	152	129° 53' 40"	166. ²⁵	90° 07'	R ASPHALT
D	153	148° 40' 30"	181. ⁶³	90° 18' 50"	R ASPHALT
D	154	143° 35'	197. ³¹	90° 12' 30"	R R.P.
D	155	142° 55'	237. ³⁴	90° 09'	R ASPHALT
D	156	127° 41'	78. ²⁸	90° 42'	L MANHOLE
D	157	25° 34' 50"	44. ⁶⁴	91° 58'	L CURB RETAINING WALL
D	158	1° 44'	69. ⁵⁹	90° 53'	PP R,
D	159	24° 11' 30"	218. ²¹	89° 19' 2.85	R @ RETAINING WALL + HI TO GROUND

SEE PAGE 30 OF
GOVERNMENT BLOCK BOOK #1
FOR DRAWINGS

STA → STA Horiz & S. DIST VERT &

PT B → E 179°56'40" 156.⁶¹ 90°44'30"

B.S. A INT

LEFT

PT E B.S. B 0°00'00"

E 33⁵⁵ 24°05'20" 180.⁴⁷ 89°29' B.M. R

E 160 89°51' 13.²⁴ 93°53' .50 TO ASPHALT

E 161 89°55' 132.⁰⁷ 89°38' .45 TO R ASPHALT

E 162 162°10' 34.⁹³ 92°12' L TREE

E 163 174°55'50" 42.⁵⁶ 91°58'30" L WALK IN TREE

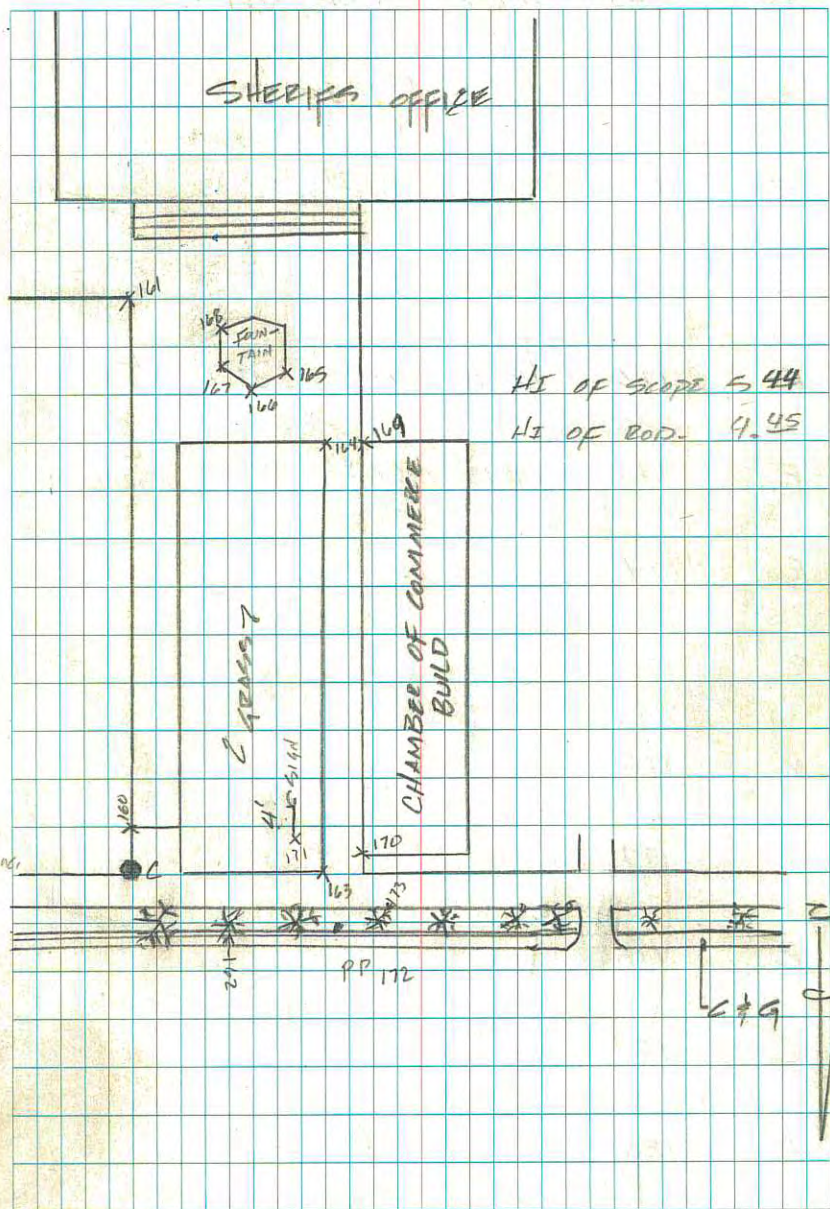
E 164 112°19'20" 110.⁴⁰ 89°58' R WALK IN TREE

E 165 109°48' 123.³⁴ 89°26' FORM FOUND .90 TO CONC. CORE. TOP WALL

E 166 102°58' 114.⁹⁵ 89°24" .65 TO CONC. TOP WALL R

E 167 94°46'00" 116.⁴³ 89°24' TOP WALL R .8 TO CONC.

E 168 94°19' 128.⁶² 89°28' TOP WALL .6 TO CONC R



HI OF SCOPE 5.44

HI OF ROD 4.45

B.S. D

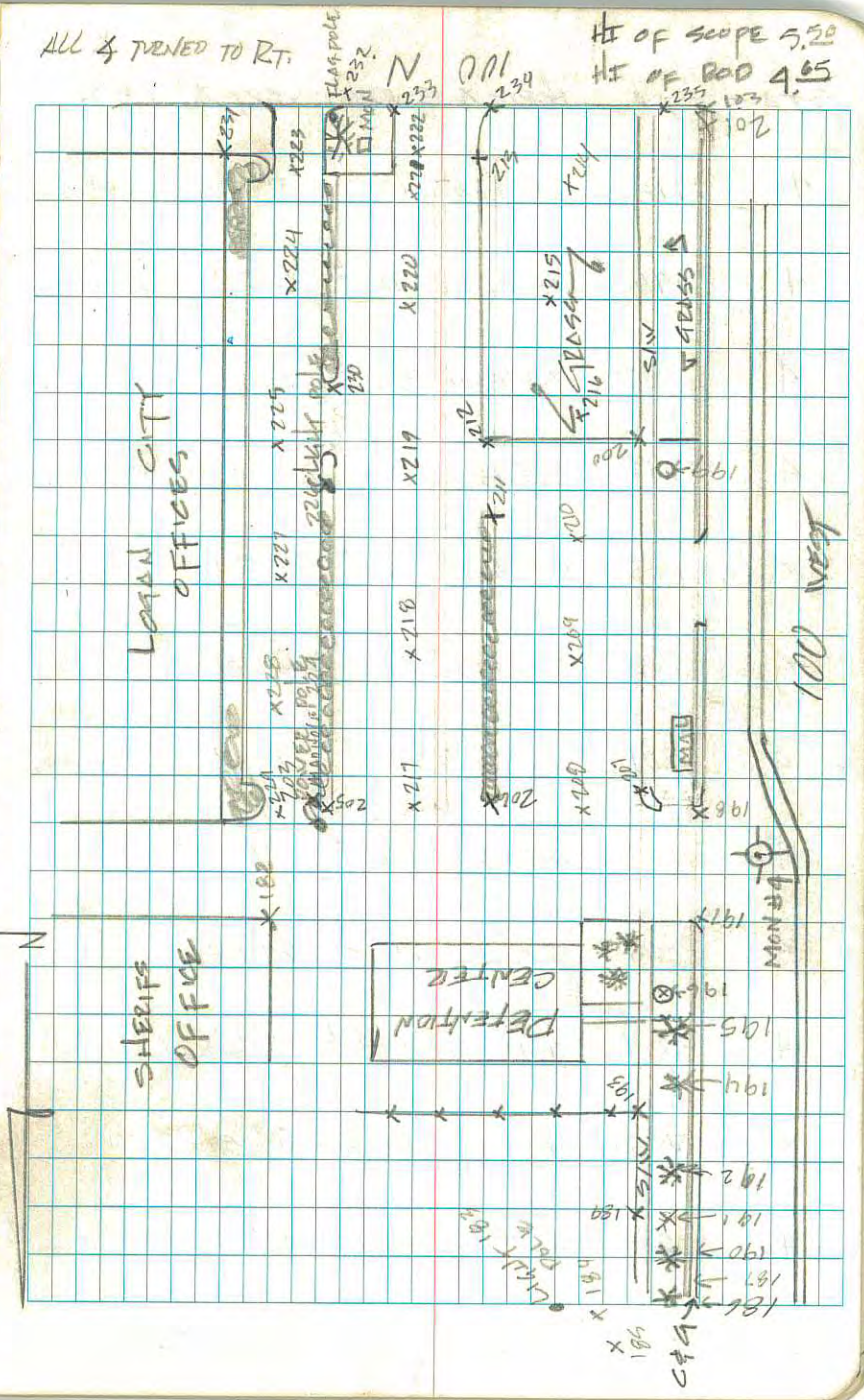
9-19-83

STA → STA HORIZ & S. DIST VERT & OBJ.

STA	MON #	HORIZ & S. DIST	VERT & OBJ.
182	MON # 4	355° 41' 55" 202.19	89° 45' 30" COR. STEEP BUDD.
183	4	283° 56' 15" 308.33	90° 30' LIGHT POLE
184	4	283° 45' 05" 310.08	90° 31' 30" TBL.
185	4	283° 45' 05" 311.06	90° 40' FL. CURB
186	4	278° 01' 10" 281.32	90° 31' TREE
187	4	272° 01' 50" 279.12	90° 34' TBL. N.F.S.
188	4	276° 46' 15" 279.14	90° 46' FL. CORN BROWN
189	4	282° 14' 10" 230.25	90° 33' 30" E EDGE S.W.
190	4	279° 01' 50" 251.22	90° 33' 30" TREE
191	4	279° 48' 10" 222.13	90° 39' TREE
192	4	280° 43' 20" 202.13	90° 42' 30" TREE
193	4	297° 30' 15" 103.30	91° 03' FENCE STOPS
194	4	289° 08' 50" 104.47	91° 05' 30" TREE

ALL & TURNED TO RT.

HI OF SCOPE 5.50
HI OF ROD 4.65



STA	STA	HORIZ. & S. DIST	VERT. &	OBJ.	
4	195	296°26'30"	75 ⁰⁰	91°26'30"	TREE
4	196	300°00"	72 ¹⁶	91°20'	WATER METER BOX
4	197	318°11'50"	33 ⁹⁴	92°56'	TOP APPROACH
4	198	34°23'	29 ³³	92°59'	TOP APPROACH
4	199	80°23'50"	169 ⁷³	90°19'	WATER METER
4	200	77°15'50"	181 ¹²	90°01'	→
4	201	86°51'20"	309 ³³	90°11'	FL CURB
4	202	84°03'10"	321 ⁴⁷	90°00'	EDGE
4	203	5°55'50"	196 ⁷⁸	89°58'	P.P.
4	204	7°17'45"	189 ⁹⁰	89°56'30"	n. RIM
4	205	7°07'	180 ⁶⁸	89°53'	
4	206	10°29'05"	110 ⁴²	90°04'	
4	207	24°22'	48 ⁸⁶	90°55'50"	P.C. CONC.

18 TO F.L.	SEE PLAN FOR DRAWING
163 TO F.L.	
3 AT BASE	
TOP 6" RETAINING WALL	.45 TO GROSS
2' EAST OF S.W.	.35 TO ASPHALT
+ .53 TO T.P.C.	
INTERSECTION OF S.W.	
NEW HI OF GUN 5 ⁵⁶	ROD SAME
POWER POLE	
BILL SYSTEM	MAIN LINE
TOP 6" PLANTER - PARKING STOP	.45 TO ASPHALT
TOP 6" PLANTER PARKING STOP	.15 TO ASPHALT
CURB .45 TO ASPHALT	

STA	→ STA	HORIZ &	S. DIST	VERT &	OBS.
					Asphalt
4	208	14°46'35"	76. ⁸³	90°44'	
4	209	46°54'35"	110. ⁷⁵	90°20'30"	Asphalt.
4	210	62°08'30"	159. ⁶⁴	90°11'	Asphalt
4	211	55°54'45"	186. ²³	89°56'20"	
4	212	59°36'00"	200. ³⁹	90°02'00"	
4	213	72°13'45"	332. ⁷⁶	89°49'30"	TOP OF
4	214	77°31'20"	320. ²³	89°57'10"	GRASS
4	215	79°39'30"	260. ⁵³	90°00'	GRASS
4	216	68°43'	199. ⁷⁹	90°02'30"	GRASS
4	217	8°49'30"	149. ³⁴	90°08'	Asphalt
4	218	34°35'	173. ¹³	90°03'	Asphalt
4	219	47°29'20"	209. ⁹⁷	89°59'	Asphalt
4	220	60°13'	271. ²²	89°59'	Asphalt

TOP 6" CURB PARKING STOP 15 TO ASPHALT.
 CORNER OF GRASS & ASPHALT. 30 TO TOP WALL
 WALL 35 TO ASPHALT 4 TO GRASS

STA → STA HORIZ^Δ S. DIST VERT^Δ OBJ.

4 234 71°28'45" 354.⁰⁰ 89°58' TOP OF

4 235 83°20'30" 335.⁶⁴ 90°15' FL CURB

236

237

238

239

240

241

242

243

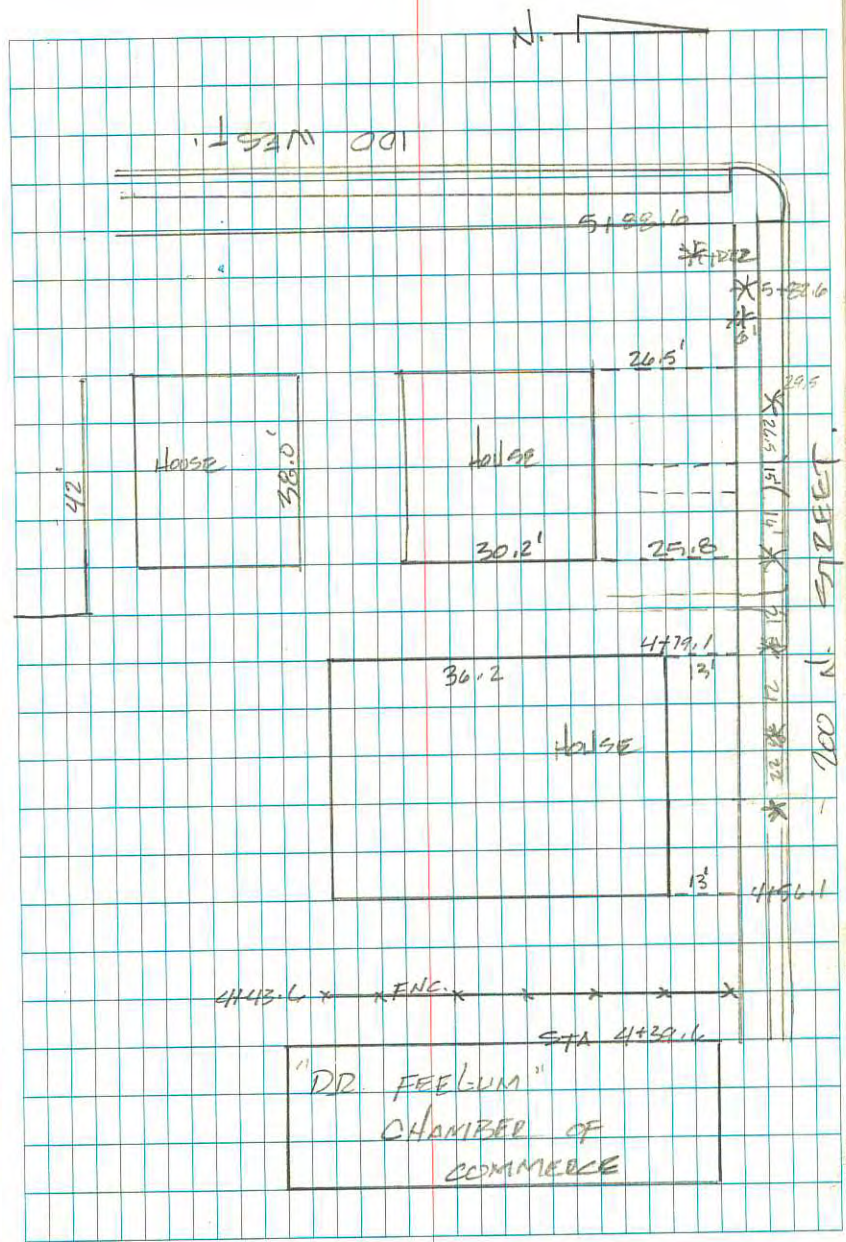
244

245

246

DRIVE + .85 TO FL.

EAST EDGE OF CATCH BASIN



1" = 30'

The right page of the notebook features a grid of graph paper. The grid consists of 20 columns and 25 rows of small squares, formed by blue horizontal and vertical lines. A single red vertical line runs down the right side of the page, serving as a margin. The grid is positioned in the upper two-thirds of the page, leaving a blank margin at the bottom.

POINT #	ELEV.	HORIZ D.
A	4527.35	0
B	4527.28	132.06
C	4526.70	114.26
D	4527.71	58.69
E	4527.33	78.82
F	4528.03	79.09
G	4527.26	48.98
H	4526.85	32.10
I	4527.83	75.31
J	4528.07	92.31
K	4527.73	80.84
L	4527.56	69.61
M	4527.43	51.09
N	4527.63	69.50
O	4527.59	45.99
P	4528.51	11.71
Q	4527.45	49.26
R	4527.87	85.44
S	4527.93	104.58
T	4529.32	39.51
U	4527.68	65.65
V	4527.54	73.83
W	4527.96	32.17
X	4527.15	10.15
Y	4527.16	31.25
Z	4526.77	36.97

NORTHING	EASTING
9951.2389	49,859.9127
9912.3352	49,752.4797
9920.3232	49,810.0255
9899.5520	49,800.4059
9887.9796	49,812.4417
9906.3842	49,840.2379
9920.2394	49,851.5795
9876.2348	49,853.1319
9860.0112	49,845.8184
9870.4045	49,858.9576
9882.2612	49,869.2739
9901.0605	49,869.5208
9900.8539	49,907.7834
9906.2246	49,869.3356
9945.1535	49,869.9173
9944.8762	49,908.7601
9878.8439	49,905.2884
9861.1228	49,912.9793
9925.3705	49,889.7769
9996.2334	49,923.8272
9967.0134	49,932.0378
9961.0037	49,890.5649
9961.9888	49,859.8729
9962.2959	49,830.6842
9968.4173	49,827.1761

POINT #	ELEV.	HEIC D.
A1	4526.12	61.63
A2	4525.75	90.87
A3	4525.52	101.49
A4	4525.30	121.93
A5	4525.12	130.80
A6	4525.12	130.80
1	4528.44	86.60
2	4525.26	20.47
3	4526.30	20.70
4	4526.03	46.19
5	4525.10	46.68
6	4526.38	51.15
7	4525.74	75.31
8	4525.89	80.39
9	4525.56	105.76
10	4524.65	106.33
11	4524.66	106.67
12	4525.59	111.91
13	4525.90	110.81
14	4525.41	123.33
15	4525.37	138.65
16	4524.76	138.83
17	4523.02	140.33
18	4525.62	159.99
19	4525.68	156.60

NORTHING		EASTING	
9963.3113	49,799.4767		
9963.9715	49,799.4767		
9952.2215	49,758.4275		
9964.7874	49,738.7378		
9971.7300	49,730.7277		
9970.7712	49,730.5793		
9867.6286	49,723.4539		
9973.2654	49,720.7914		
9973.9806	49,720.7103		
9974.1047	49,686.3684		
9974.3168	49,685.9267		
9965.9717	49,678.2505		
9970.6288	49,654.5301		
9971.3779	49,649.4926		
9975.1574	49,624.3616		
9975.2708	49,623.8030		
9967.6408	49,622.1977		
9973.5029	49,617.7892		
9956.8361	49,617.2295		
9976.3117	49,606.6909		
9975.5841	49,591.0291		
9975.6119	49,590.8513		
9964.9068	49,588.0919		
9968.8541	49,568.6968		
9957.6670	49,571.4463		

POINT

#	ELEV.	Horiz D.
20	4525.55	166.76
21	4526.05	101.80
22	4526.71	101.68
23	4527.36	149.65
24	4527.09	149.82
25	4526.64	63.21
26	4526.51	63.44
27	4526.66	58.82
28	4526.33	58.55
29	4526.95	107.75
30	4526.80	108.32
31	4527.27	104.89
32	4526.82	104.62
33	4526.86	73.76
34		
35	4527.43	166.97
36	4527.43	167.24
37	4527.81	197.02
38	4528.07	200.21
39	4528.71	207.99
40	4527.76	188.59
41	4527.97	190.18
42	4526.83	297.65
43	4526.46	90.97
44	4526.23	77.77
45	4525.89	87.77

NORTHING

EASTING

9957.8979	49561.2890
9954.8428	49626.2086
9954.5412	49626.3268
9845.5152	49625.0373
9845.3518	49624.9625
9952.4288	49664.8182
9952.3151	49664.5913
9951.5936	49669.2397
9951.6052	49669.5095
9868.2030	49662.9657
9867.7295	49662.6467
9868.4476	49667.4745
9868.5278	49667.8294
9880.6356	49734.5033
9824.5951	49622.6256
9822.5304	49624.7765
9786.6188	49624.2565
9784.5567	49621.5348
9785.5143	49606.2040
9797.6009	49622.7851
9801.4219	49614.6255
9789.5927	49479.9536
9855.0687	49668.7692
9903.3101	49669.1191
9952.1374	49640.2580

POINT #	ELEV.	HORIZ D.
46	4526.13	97.99
47	4526.38	121.16
48	4526.66	144.01
49	4526.73	158.18
50	4526.30	133.06
51	4525.64	128.63
52	4526.24	28.94
53	4527.21	68.83
54	4527.66	131.20
55	4528.43	73.66
56	4528.54	138.89
57	4528.27	136.54
58	4528.79	111.68
59	4528.20	108.99
60	4529.02	94.23
61	4529.49	92.07
62	4529.07	102.05
63	4528.56	113.03
64	4529.22	83.78
65	4527.04	181.93
66	4528.70	54.53
67	4528.83	60.96
68	4529.05	80.56
69	4528.58	51.56
70	4528.38	28.33
71	4528.45	16.15

NORTHING		EASTING	
9911.7333		49,639.6524	
9872.2011		49,638.7262	
9841.3347		49,638.4467	
9864.6203		49,579.5731	
9918.5627		49,599.7823	
9957.2435		49,599.4141	
9954.7819		49,699.0731	
9893.0755		49,696.3016	
9827.3330		49,694.2228	
9880.7233		49,734.3575	
9890.5592		49,945.9112	
9891.5901		49,931.6371	
9851.1138		49,944.4838	
9891.8602		49,947.1266	
9810.7330		49,943.8961	
9771.8421		49,943.1899	
9745.4669		49,995.3779	
9725.2551		49,946.6778	
9753.5100		49,928.9637	
9940.7453		49,952.9769	
9779.4307		49,906.3966	
9750.6202		49,900.8421	
9725.4804		49,903.5986	
9738.5369		49,867.8314	
9763.7010		49,837.5606	
9981.9610		49,844.8034	

POINT
#

ELEV.

HORIZ D.

72	4528.37	49.75
73	4528.08	91.14
74	4528.43	135.84
75	4527.96	131.63
76	4528.26	138.99
77	4528.37	138.77
78	4528.81	146.93
79	4527.99	135.79
80	4527.68	127.24
81	4527.58	77.69
82		
83		
84	4528.73	49.96
85	4528.53	23.10
86	4528.36	16.38
87	4528.35	34.05
88	4528.26	41.66
89	4528.55	82.07
90	4530.82	220.80
91	4530.44	86.44
92	4530.62	95.53
93	4530.80	117.17
94	4530.61	109.89
95	4531.33	157.43
96	4533.24	212.92

NORTHING

EASTING

9758.7724	49,812.0801
9782.5504	49,761.5170
9785.1641	49,716.6925
9798.6030	49,721.9264
9759.6854	49,716.3840
9728.4883	49,727.0359
9751.5841	49,710.1025
9789.3715	49,716.7271
9763.8018	49,727.5449
9760.2131	49,779.8680
9769.9551	49,898.9906
9783.2531	49,875.1623
9801.8520	49,860.8694
9820.7520	49,860.9575
9826.6443	49,867.4782
9825.7978	49,925.2341
9664.0227	49,923.2693
9665.7196	49,787.0506
9641.6301	49,786.6203
9617.7357	49,796.5731
9617.8321	49,786.1986
9554.4061	49,784.7946
9499.2775	49,799.6235

POINT #	ELEV.	HORIZ D.
97	4531.61	199.77
98	4530.28	187.78
99	4530.91	279.77
100	4530.44	241.58
101	4530.31	247.80
102	4530.57	289.57
103	4530.24	236.21
104	4529.64	128.64
105	4529.94	119.44
106	4528.69	183.12
107	90 41 20 4528.27	225.92
108	90 44 4528.58	188.37
109	90 50 4528.95	140.18
110	90 51 4529.46	103.42
111	4531.15	289.91
112	4529.58	242.07
113	4530.80	215.37
114	4530.39	159.57
115	4530.13	84.26
116	4529.88	35.54
117	4529.47	18.77
118	4528.79	69.74
119	4529.10	50.08
120	4528.72	110.02
121	4527. 27	121. 50
122	4528. 44	78.94

NORTHING	EASTING
9501.0406	49,770.2417
9501.9838	49,693.7721
9412.8269	49,662.3524
9451.4418	49,662.7748
9452.2154	49,632.4964
9412.3634	49,619.9626
9477.7709	49,599.2005
9574.1869	49,647.9001
9652.5694	49,590.3517
9655.5825	49,523.9890
9696.4063	49,478.1287
9695.5942	49,515.6717
9694.5755	49,563.8550
9693.8501	49,600.6147
9688.0796	49,993.8493
9695.4468	49,945.9394
9695.6977	49,919.2232
9696.4288	49,863.3016
9695.7480	49,787.9699
9677.0608	49,737.2391
9678.3579	49,688.8288
9677.4986	49,635.2411
9738.1846	49,692.2523
9798.7749	49,691.2614
9784.9360	49,628.7631
9716.0957	49,629.6220

POINT
#

ELEV.

HORIZD.

123	90° 58'	4529.21	105.18
124	90° 40'	4528.90	179.28
125	90° 42' 30"	4527.91	248.71
126	90° 43'	4527.02	316.99
127	90° 43'	4526.18	384.17
128	90° 38' 10"	4526.25	426.60
129		4528.04	127.17
130		4528.98	72.09
131		4529.49	72.56
137		4529.45	41.74
133		4530.15	45.76
134		4530.10	66.88
135		4530.56	93.73
136		4530.07	66.43
137		4529.75	64.31
138		4529.39	98.99
139		4529.91	107.89
140		4530.06	90.00
141		4531.21	113.29
142		4531.01	135.00
143		4530.98	118.10
144		4530.10	114.25
145		4529.52	133.41
146		4532.53	143.66
147		4530.15	152.73
148		4530.32	141.77

NORTHING

EASTING

9676.4676	49599.5716
9677.3137	49525.0766
9679.1362	49455.4482
9679.1968	49387.1198
9679.9759	49319.8905
9677.7675	49277.5037
9633.5922	49589.7155
9654.5042	49640.2249
9651.4115	49642.1760
9648.5065	49696.0226
9648.9982	49725.2625
9650.0691	49757.9711
9623.2329	49770.2416
9626.4765	49724.9778
9627.5165	49686.7589
9625.1637	49628.7006
9602.5528	49640.0484
9599.9486	49694.8510
9596.5851	49768.1781
9578.2449	49770.8682
9574.9188	49732.6013
9578.0069	49678.9430
9579.2756	49628.7669
9561.4553	49638.7831
9550.9904	49639.5626
9548.0910	49643.6679

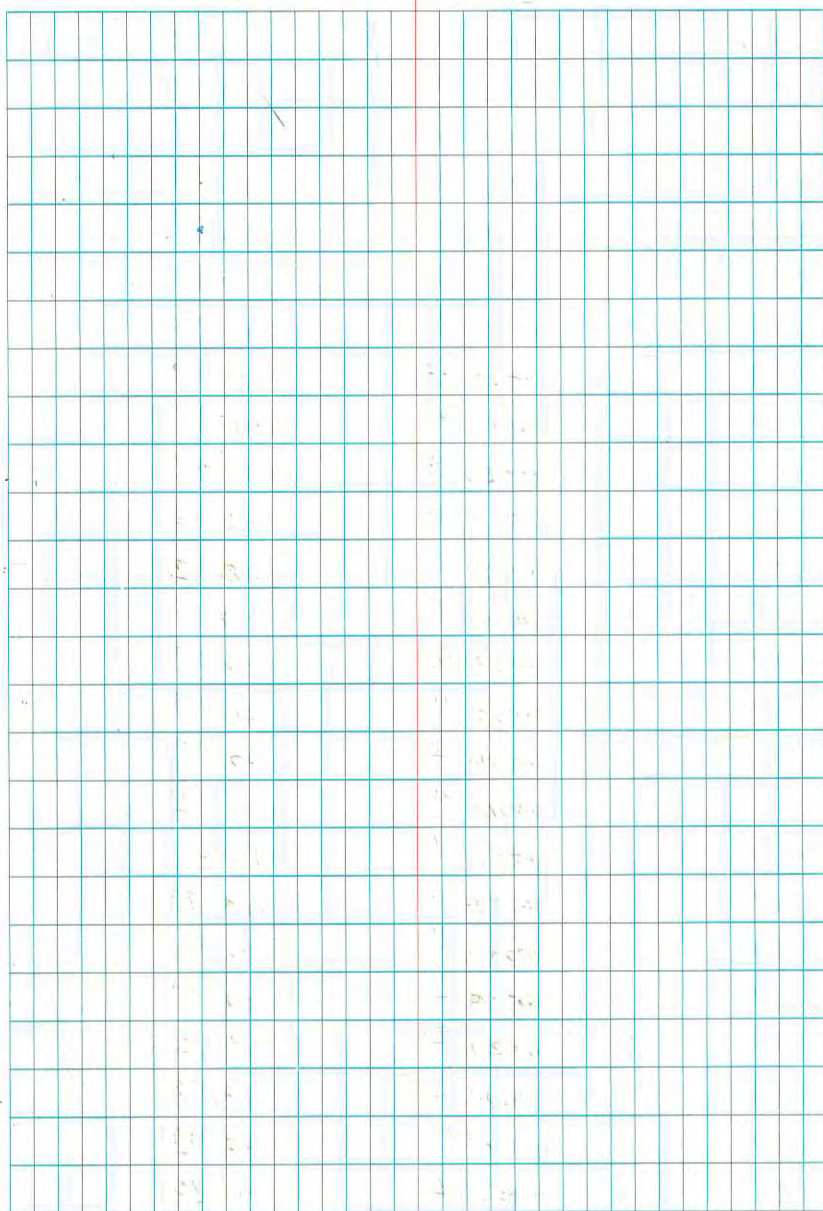
POINT

#

ELEV.

HORIZ D

POINT #	ELEV.	HORIZ D
175		
176		
177		
178		
179		
180		
181		
182	894530 4527.95	202.19
183	4524.41	308.32
184	4524.26	310.07
185	4523.48	311.04
186	4524.56	281.31
187	4524.34	279.11
188	4523.37	279.12
189	4524.86	230.24
190	4524.65	251.89
191	4524.58	222.12
192	4524.60	202.11
193	4525.21	103.28
194	4525.11	104.45
195	4525.21	74.98
196	4525.42	72.14
197	4525.36	33.90
198	4525.57	29.33
199	4526.16	169.73
200	4527.05	181.12



TO ESTABLISH FLOOR ELEVATIONS
ON THE COUNTY COURT HOUSE
& THE JAIL

ROBERT
JIM P

1-16-83
COLD 10°F.

STA → STA + HI - ELEV

5.85

4539.36

4.68

4534.31

4534.68

BM 4534.312 (US GS)

COURTHOUSE MAIN FLOOR.

8.78

4536.85

5.01

4527.27

~~4531.77~~

4531.04

6.90

4529.55

6.44

4532.69

2.30

4530.39

1660 4527.87
~~#165 4527.89~~
BM #168 ~~4527.87~~

CLERKS OFFICE

CHAMBER OF COMMERCE

BM MIN #4 4526.2504

4528.28
LOGAN CITY 441/4521.84 DETENTION CENTER